

Community Foundation and Community Fund

Community foundation or geographic-based community fund? What is the best solution for our community?



COMMUNITY FOUNDATIONS OF CANADA
FONDATEURS COMMUNAUTAIRES DU CANADA
all for community. ensemble pour tous.

What is the Difference Between a Foundation and Fund?

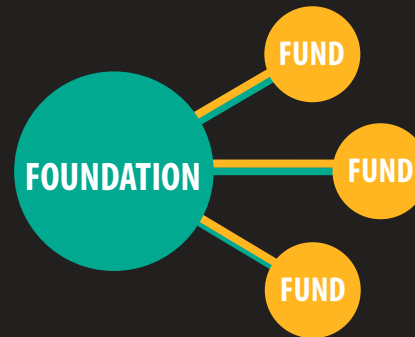
Community Foundation

A non-profit corporation registered as a public foundation with the Canada Revenue Agency.

Governed by a Board of Directors.

Responsible for financial records and reporting, tax filing and audit, administrative infrastructure and resources, investment management, granting administration, organizing joint meetings, entering into fund agreements with donors.

Has liability for all activities and volunteers.



Community Fund (geographic-based)

A component of a Community Foundation that may or may not be a separate legal entity.

Run by a local Advisory Committee in liaison with the Community Foundation board and support from Community Foundation staff. Adheres to the Community Foundation's policies and practices.

May or may not implement own application process; provides grant recommendations to the Community Foundation.

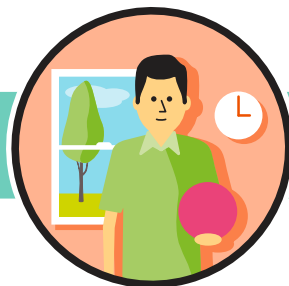
There can be multiple geographically-based Community Funds partnered with one Community Foundation.

How Does a Foundation and Fund Work Together?



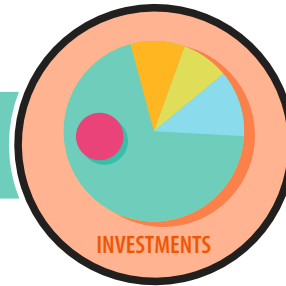
1 COMMUNITY FUND COMMITTEE

A committee of local citizens works with a partner Community Foundation to establish the Community Fund.



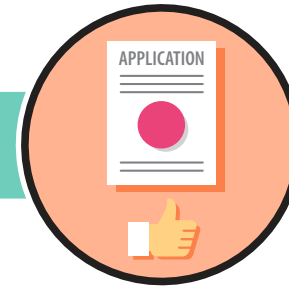
2 DONOR

Anyone can be a donor and contribute a gift, small or large, to a Community Foundation designated for their community.



3 INVESTMENT

Community Fund gifts are stewarded by the Community Foundation and added to its investment pool. Income is used to make grants.



4 RECOMMENDATIONS

The Community Fund assesses funding priorities and applications from community organizations that are qualified donees. Recommendations are made to the Community Foundation.



5 GRANTING

The Community Foundation approves and in partnership with the Community Fund distributes funds to the Community Fund's geographic area.